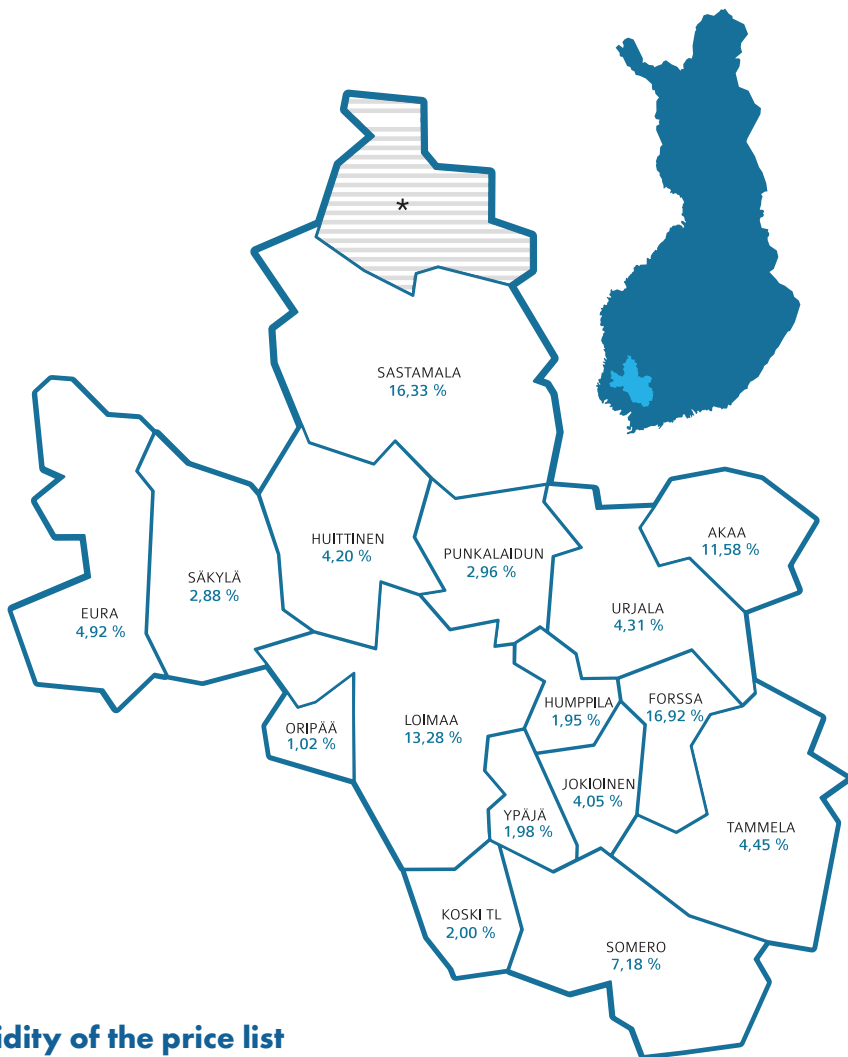


# List of prices

**BIN EMPTYING AND  
PICK-UP SERVICE**

**2026**





## Validity of the price list

Loimi-Hämeen Jätehuolto Oy takes care of waste utilisation and processing in its sub-municipalities.

The municipalities are Akaa, Forssa, Eura, Huitinen, Humpkala, Jokioinen, Koski TL, Loimaa, Oripää, Punkalaidun, Sastamala (excluding Suodenniemi and Mouhijärvi), Somero, Säskylä, Tammela, Urjala and Ypäjä.

**This price list is valid from 1.1.2026**, until the new revised price list comes into effect. However, any changes in prices due to legislation or similar will be reflected in the fees from the date of entry into force.

**The current tariff and price list can be found at:** [www.jateltk.fi](http://www.jateltk.fi) and [www.lhj.fi](http://www.lhj.fi)

# TABLE OF CONTENTS

<b>Basic fee</b> . . . . .	<b>4</b>
<b>Separate collection of biowaste organised by the municipality</b> . . . . .	<b>4</b>
<b>Supplementary mixed waste collection organised by the municipality</b> . . . . .	<b>5</b>
<b>Separate collection of cardboard packaging organised by the municipality</b> . . . . .	<b>6</b>
<b>Separate collection of plastic packaging organised by the municipality</b> . . . . .	<b>7</b>
<b>Separate collection of metal packaging organised by the municipality</b> . . . . .	<b>8</b>
<b>Separate collection of glass packaging organised by the municipality</b> . . . . .	<b>9</b>
<b>Other fees</b> . . . . .	<b>10</b>
<b>Products for sale</b> . . . . .	<b>11</b>
<b>Pick-up service</b> . . . . .	<b>12</b>
<b>The most common waste fees for the pick-up service</b> . . . . .	<b>13</b>
<b>Glossary of fees and services</b> . . . . .	<b>14-17</b>
<b>Determination of waste fees</b> . . . . .	<b>18</b>
<b>Waste search</b> . . . . .	<b>19</b>
<b>Contact details</b> . . . . .	<b>20</b>
<b>Waste stations and opening hours</b> . . . . .	<b>20</b>

## Need help sorting waste?

Waste search is a service maintained by LHJ, where you can find sorting instructions and collection points for up to a thousand different objects and things. Service is available only in Finnish.

Check it out at: [www.lhj.fi/jatehaku](http://www.lhj.fi/jatehaku)



## BASIC FEE

Use of the property	VAT 0%	VAT 25,5%
Permanent residence . . . . .	29,48 € . . . . .	37,00 €
Uninhabited or holiday home . . . . .	19,12 € . . . . .	24,00 €
Permanent residence with at least 5 apartments (separate collection of biowaste and packaging waste) . . . . .	25,90 € . . . . .	32,50 €

## SEPARATE BIO-WASTE COLLECTION ORGANICED BY THE MUNICIPALITY

**The emptying fee includes waste bin as a service**  
(manually movable bins)

Fees for emptying manually movable biowaste bins	VAT 0%	VAT 25,5%
140 l waste bin . . . . .	7,41 € . . . . .	9,30 €
140 l waste bin, ventilated . . . . .	8,43 € . . . . .	10,58 €
240 l waste bin . . . . .	9,43 € . . . . .	11,84 €
240 l waste bin, ventilated . . . . .	10,45 € . . . . .	13,12 €
360 l waste bin . . . . .	11,87 € . . . . .	14,90 €
660 l waste bin . . . . .	19,33 € . . . . .	24,26 €
Waste bag installation in a 140 l waste container* . . . . .	1,75 € . . . . .	2,20 €
Waste bag installation in a 240 l waste container** . . . . .	1,85 € . . . . .	2,32 €
Heavy bin (weighing more than 60 kg) additional charge . . . . .	1,73 € . . . . .	2,17 €
Collection of excess waste bags (decomposing waste) . . . . .	9,47 € . . . . .	11,88 €
Additional pickup . . . . .	11,27 € . . . . .	14,14 €

\* No installation to ventilated containers

Crane-liftable biowaste containers emptying fees (surface and deep collection tanks over 200 l)	VAT 0%	VAT 25,5%
0,2 m <sup>3</sup> container . . . . .	19,55 € . . . . .	24,53 €
0,5 m <sup>3</sup> container . . . . .	25,53 € . . . . .	32,04 €
0,8 m <sup>3</sup> container . . . . .	31,48 € . . . . .	39,50 €
1,0 m <sup>3</sup> container . . . . .	35,47 € . . . . .	44,51 €
1,3 m <sup>3</sup> container . . . . .	41,45 € . . . . .	52,02 €
Waste bag installation in a container from 0.5 m <sup>3</sup> to 0.8 m <sup>3</sup> . . . . .	8,57 € . . . . .	10,76 €
Waste bag installation in a 1.3 m <sup>3</sup> container . . . . .	9,64 € . . . . .	12,10 €

# SUPPLEMENTARY MIXED WASTE COLLECTION ORGANIZED BY THE MUNICIPALITY

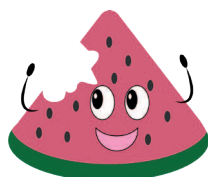


On properties designated by the waste board.

Mixed waste collection	Emptying interval	VAT 0%	VAT 25,5%
Permanent residence	2 weeks	199,62 €	250,52 €
Permanent residence	4 weeks	141,47 €	177,54 €
Permanent residence	8 weeks	74,64 €	93,67 €
Permanent residence	12 weeks	49,48 €	62,10 €
Permanent residence	16 weeks	44,78 €	56,20 €
Holiday home	2 weeks	141,47 €	177,54 €
Holiday home	4 weeks	66,84 €	83,88 €
Holiday home	8 weeks	45,14 €	56,65 €
Holiday home	12 weeks	30,38 €	38,13 €
Holiday home	16 weeks	27,08 €	33,99 €

Collectibles by van	Emptying interval	VAT 0%	VAT 25,5%
Permanent residence	4 weeks	183,14 €	229,84 €
Permanent residence	8 weeks	94,61 €	118,74 €
Permanent residence	12 weeks	65,09 €	81,69 €
Permanent residence	16 weeks	56,77 €	71,25 €
Holiday home	4 weeks	85,93 €	107,84 €
Holiday home	8 weeks	52,94 €	66,44 €
Holiday home	12 weeks	38,18 €	47,92 €
Holiday home	16 weeks	31,76 €	39,86 €

Other fees	VAT 0%	VAT 25,5%
Shared bin partner, permanent residence	141,47 €	177,54 €
Shared bin partner, holiday homes	66,84 €	83,88 €
User of a waste station / area collection point, permanent residence	164,91 €	206,96 €
User of a waste station / area collection point, holiday home	97,21 €	122,00 €
Compensation price for unemptied waste container (140 l - 660 l)	8,68 €	10,89 €
Export or replacement of an additional waste container	6,45 €	8,09 €
Excess emptying of the waste container	15,00 €	18,83 €



Did you know that by separately collecting or composting your bio-waste, you can apply for up to 16 weeks' collection intervals for your mixed waste bin? An application for an extension of the interval for emptying the mixed waste bin should always be submitted to the Waste Management committee. **You can submit your application at [www.jateltk.fi](http://www.jateltk.fi)**

# SEPARATE COLLECTION OF CARDBOARD PACKAGING ORGANIZED BY THE MUNICIPALITY

The emptying fee includes waste bin as a service (manually movable bins)

**Separate collection of residential properties, fees for emptying manually movable packaging waste bins**      **VAT 0 %**      **VAT 25,5%**

140 l waste bin .....	7,59 €	9,53 €
240 l waste bin .....	7,59 €	9,53 €
360 l waste bin .....	8,22 €	10,32 €
660 l waste bin .....	13,07 €	16,40 €
Additional waste starting from 0.5 m <sup>3</sup> .....	7,59 €	9,53 €
Additional garbage bags 10 l -150 l .....	6,46 €	8,11 €

**Separate collection of residential properties, emptying fees for packaging waste containers lifted by crane**      **VAT 0 %**      **VAT 25,5%**

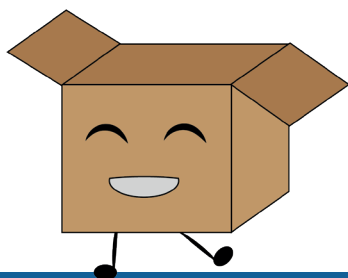
Surface and deep collection tanks over 200 l .....	33,92 €	42,57 €
--	---------	---------

**Separate collection of non-residential properties, Fees for emptying manually movable packaging waste bins**      **VAT 0 %**      **VAT 25,5%**

140 l waste bin .....	8,46 €	10,62 €
240 l waste bin .....	8,46 €	10,62 €
360 l waste bin .....	9,10 €	11,42 €
660 l waste bin .....	13,95 €	17,51 €
Additional waste from the beginning 0.5 m <sup>3</sup> .....	8,46 €	10,62 €
Additional garbage bags 10 l -150 l .....	6,46 €	8,11 €

**Separate collection of non-residential properties, emptying fees for packaging waste containers lifted by crane**      **VAT 0 %**      **VAT 25,5%**

Surface and deep collection tanks over 200 l .....	34,80 €	43,67 €
--	---------	---------



Separately collected cardboard packaging is for example used to make cardboard boxes, toilet paper tubes and new packaging.

# SEPARATE COLLECTION OF PLASTIC PACKAGING ORGANIZED BY THE MUNICIPALITY



The emptying fee includes waste bin as a service (manually movable bins)

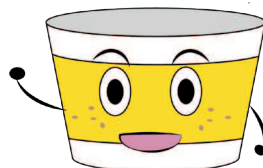
<b>Separate collection of residential properties, fees for emptying manually movable packaging waste bins</b>	<b>VAT 0%</b>	<b>VAT 25,5%</b>
140 l waste bin .....	8,15 € .....	10,23 €
240 l waste bin .....	8,15 € .....	10,23 €
360 l waste bin .....	9,26 € .....	11,62 €
660 l waste bin .....	14,48 € .....	18,17 €
Additional waste from the beginning 0.5 m <sup>3</sup> .....	7,75 € .....	9,73 €
Additional garbage bags 10 l -150 l .....	6,46 € .....	8,11 €

<b>Separate collection of residential properties, emptying fees for packaging waste containers lifted by crane</b>	<b>VAT 0%</b>	<b>VAT 25,5%</b>
Surface and deep collection tanks over 200 l .....	34,87 € .....	43,76 €

<b>Separate collection of non-residential properties, Fees for emptying manually movable packaging waste bins</b>	<b>VAT 0%</b>	<b>VAT 25,5%</b>
140 l waste bin .....	8,15 € .....	10,23 €
240 l waste bin .....	8,15 € .....	10,23 €
360 l waste bin .....	9,26 € .....	11,62 €
660 l waste bin .....	14,48 € .....	18,17 €
Additional waste from the beginning 0.5 m <sup>3</sup> .....	7,75 € .....	9,73 €
Additional garbage bags 10 l -150 l .....	6,46 € .....	8,11 €

<b>Separate collection of non-residential properties, emptying fees for packaging waste containers lifted by crane</b>	<b>VAT. 0%</b>	<b>VAT 25,5%</b>
Surface and deep collection tanks over 200 l .....	34,87 € .....	43,76 €

Separately collected plastic packaging is used to make things such as buckets, watering cans and new plastic packaging.



# SEPARATE COLLECTION OF METAL PACKAGING ORGANIZED BY THE MUNICIPALITY

The emptying fee includes waste bin as a service (manually movable bins)

**Separate collection of residential properties, fees for emptying manually movable packaging waste bins**      **VAT 0 %**      **VAT 25,5%**

140 l waste bin .....	8,34 €	10,47 €
240 l waste bin .....	8,34 €	10,47 €
360 l waste bin .....	8,99 €	11,28 €
660 l waste bin .....	13,83 €	17,36 €
Additional waste from the beginning 0.5 m <sup>3</sup> .....	8,34 €	10,47 €
Additional garbage bags 10 l -150 l .....	6,46 €	8,11 €

**Separate collection of residential properties, emptying fees for packaging waste containers lifted by crane**      **VAT 0 %**      **VAT 25,5%**

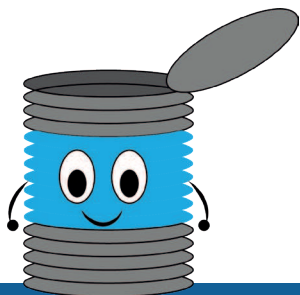
Surface and deep collection tanks over 200 l .....	40,24 €	50,50 €
--	---------	---------

**Separate collection of non-residential properties fees for emptying manually movable packaging waste bins**      **VAT 0 %**      **VAT 25,5%**

140 l waste bin .....	8,50 €	10,67 €
240 l waste bin .....	8,50 €	10,67 €
360 l waste bin .....	9,14 €	11,47 €
660 l waste bin .....	13,98 €	17,54 €
Additional waste from the beginning 0.5 m <sup>3</sup> .....	8,50 €	10,67 €
Additional garbage bags 10 l -150 l .....	6,46 €	8,11 €

**Separate collection of non-residential properties, emptying fees for packaging waste containers lifted by crane**      **VAT 0 %**      **VAT 25,5%**

Surface and deep collection tanks over 200 l .....	40,40 €	50,70 €
--	---------	---------



Separately collected metal packaging is used for example. to make new packaging, bicycle frames or car parts.

# ORGANIZED BY THE MUNICIPALITY

## SEPARATE COLLECTION OF GLASS PACKAGING



**The emptying fee includes waste bin as a service (manually movable bins)**

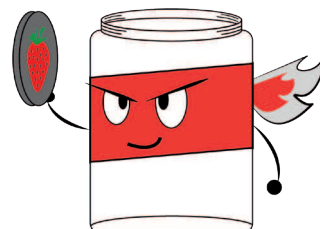
<b>Separate collection of residential properties, Fees for emptying manually movable packaging waste bins</b>	<b>VAT 0 %</b>	<b>VAT 25,5%</b>
140 l waste bin .....	11,62 € .....	14,58 €
240 l waste bin .....	11,62 € .....	14,58 €
360 l waste bin .....	13,99 € .....	17,56 €
660 l waste bin .....	16,14 € .....	20,26 €
Additional waste from the beginning 0.5 m <sup>3</sup> .....	11,62 € .....	14,58 €
Additional garbage bags 10 l -150 l .....	6,46 € .....	8,11 €

<b>Separate collection of residential properties, emptying fees for packaging waste containers lifted by crane</b>	<b>VAT 0 %</b>	<b>VAT 25,5%</b>
Surface and deep collection tanks over 200 l .....	40,41 € .....	50,71 €

<b>Separate collection of non-residential properties Fees for emptying manually movable packaging waste bins</b>	<b>VAT 0 %</b>	<b>VAT 25,5%</b>
140 l waste bin .....	11,62 € .....	14,58 €
240 l waste bin .....	11,62 € .....	14,58 €
360 l waste bin .....	13,99 € .....	17,56 €
660 l waste bin .....	16,14 € .....	20,26 €
Additional waste from the beginning 0.5 m <sup>3</sup> .....	11,62 € .....	14,58 €
Additional garbage bags 10 l -150 l .....	6,46 € .....	8,11 €

<b>Separate collection of non-residential properties, emp- tying fees for packaging waste containers lifted by crane</b>	<b>VAT 0 %</b>	<b>VAT 25,5%</b>
Surface and deep collection tanks over 200 l .....	40,41 € .....	50,71 €

Separately collected glass packaging is used for example to make new glass bottles and jars, foam glass or glass wool.



# OTHER FEES

<b>Additional fees</b>	<b>VAT 0 %</b>	<b>VAT 25,5%</b>
Shifting a bin or an additional bag (charge for each starting 5 m exceeding 10 m) .....	0,79 €	0,99 €
Surcharge for a non-wheeled container .....	9,26 €	11,62 €
Significant amounts of unrelated waste (140 l - 660 l waste bins) .....	8,52 €	10,69 €
Significant amount of unrelated waste (containers and express containers) .....	52,79 €	66,25 €
Significant amount of unrelated waste, causing an interruption of the emptying route and the waste collection vehicle an additional emptying .....	108,74 €	136,47 €
Unnecessary collection (collection of the bin prevented e.g. due to a locked gate)		
• Waste bins max. 660 l .....	4,89 €	6,14 €
• Deep or surface collection containers .....	16,89 €	21,20 €
Extra pick-up .....	11,90 €	14,93 €
Additional pick-up charge if the route gets longer by at least 4 km. Charge for more than 4 km (€/km) .....	3,16 €	3,97 €
Additional work (hourly rate) .....	116,13 €	145,74 €
<b>Other fees</b>	<b>VAT 0 %</b>	<b>VAT 25,5%</b>
Freight service fee for a single waste bin (includes export, collection and exchange of one waste bin) .....	25,63 €	32,17 €
Freight service fee for 2-5 waste bins (export, pick-up or exchange) .....	41,34 €	51,88 €

# PRODUCTS FOR SALE



Paper bag bundles and racks are sold at LHJ's waste stations. Information signs and bags used in collection equipment can be ordered from customer service, tel. 03 424 2622.

## Products for sale

VAT 25,5%

Waste bin bag (biowaste, 140 l) roll of 20 pcs .....	23,00 €
Waste bin bag (biowaste, 240 l) roll of 20 pcs .....	26,00 €
Rack for biowaste bags in the kitchen .....	9,00 €
Paper biobag bundle, 20 pcs * .....	4,00 €
Paper biobag bundle, 50 pcs .....	8,00 €
Sorting instruction sign for housing companies (in Finnish), 100x42cm .....	24,80 €

\* Valid while stocks last

<p><b>BIOJÄTE</b></p> <p>Lajittele biojätteeseen:</p> <ul style="list-style-type: none"> <li>• Ruoantähteet</li> <li>• Hedelmien ja vihannesten kuoret</li> <li>• Kalanruodot</li> <li>• Kanannunan kuoret ja munakennot silputtuna</li> <li>• Kahvinporot ja teelehdet suodatinpaperineen</li> <li>• Pehmeäpaperit, kuten talouspaperit ja lautasliinat</li> <li>• Kasvinosat ja kuivuneet kukat</li> </ul> <p>Lajitelluista biojätteistä valmistetaan biokaasua</p>	<p><b>KARTONKI</b></p> <p>Lajittele kartonki- ja pahvipakkauskiin litistettynä:</p> <ul style="list-style-type: none"> <li>• Aaltopahvilaatikat, paperipussit ja -kassit</li> <li>• Kartontölköt, esim. maltoölököt</li> <li>• Kartonkiset einespakkaukset</li> <li>• Munakennot</li> <li>• WC- ja talouspaperirullien hylsyt</li> <li>• Käärepaperit, esimerkiksi kopiopaperin kääreet</li> </ul> <p>Lajitelluista kartonkipakkausista valmistetaan esimerkiksi pakkauskartonkia ja aaltopahvia</p>	<p><b>LASI</b></p> <p>Lajittele lasipakkauskiin:</p> <ul style="list-style-type: none"> <li>• Lasipullot (myös värilliset)</li> <li>• Lasipurkit (myös värilliset)</li> <li>• Lasipakkauskiin kuuluvan pakkauksen voi tunnistaa myös kolmiomerkin yhteydessä olevista koodista: GL70, GL71 tai GL72</li> </ul> <p>Lajitelluista lasipakkausista valmistetaan esimerkiksi vaahdotalasia ja uusia lasipakkausia</p>	<p><b>METALLI</b></p> <p>Lajittele metallipakkauskiin ja pienmetalliin:</p> <ul style="list-style-type: none"> <li>• Säilytettäviä ja parittomattomia juomatölkkejä</li> <li>• Metallikannet, -korkit ja -sulkiimet</li> <li>• Alumiinikuoret, -foliat ja -kannet</li> <li>• Maalipurkit ja paineettomat aerosolipullot</li> <li>• Kattilat, paistinpannut, aterimet ja sakset</li> </ul> <p>Lajitelluista metallista valmistetaan esimerkiksi uusia metallipakkausia ja autojen osia</p>
<p><b>MUOVIPAKKAUKSET</b></p> <p>Lajittele muovipakkauskiin korkit ja kannet irrotettuina:</p> <ul style="list-style-type: none"> <li>• Elintarvikkeiden muoviset pakkaukset, kuten jogurttipurkit ja leikkelepakkaukset</li> <li>• Pesuaine-, shampoo- ja saippuapakkaukset</li> <li>• Muovipullot, -kannetrit ja -purkit litistettynä</li> <li>• Muovikassit, -pussit ja -kääreet</li> <li>• EPS- eli styroksipakkaukset</li> </ul> <p>Lajitelluista muovipakkausista valmistetaan esimerkiksi tiskiharjoja ja muovivämpäreitä</p>	<p><b>PAPERI</b></p> <p>Lajittele paperiin:</p> <ul style="list-style-type: none"> <li>• Sanoma- ja aikakauslehdet, mainospösti, esitteet</li> <li>• Kirjekuoret (myös ikkunalliset) ja postikortit</li> <li>• Tuoteluettelot</li> <li>• Kopiopaperit ja tulosteet</li> <li>• Valkoiset piirustus- ja lehtiäpaperit</li> </ul> <p>Lajitelluista paperista valmistetaan esimerkiksi wc- ja sanomalehtipapereita</p>	<p><b>SEKAJÄTE</b></p> <p>Lajittele sekajätteeseen:</p> <ul style="list-style-type: none"> <li>• Posliini, keramiikka ja lasiastiat</li> <li>• Kumi, nahka, kangas sekä liikkeet ja voimakkaan hajuiset tekstiilit</li> <li>• Kissanhiekka, muurin polypussit</li> <li>• Terveystiteet, vaipat ja laastarit</li> <li>• Tupakanlumppit ja jäähtynyt tuhka tiiviisti pakattuna</li> </ul> <p>Sekajätteestä tuotetaan ekovoimaloissa sähköä ja lämpöenergiaa</p>	<p><b>KIITOS KUN LAJITTELET!</b></p> <p></p> <p>puh. 03 424 2622 asiakaspalvelu@lhj.fi www.lhj.fi/kiertokaveri</p> <p><b>LOIMI-HÄMEEN JÄTEHUOLTO</b></p> <p>Katso lisää lajitteluohjeita Kiertokaverista </p>

Sorting instructions in other languages are available for downloading and printing for free on our website:

<https://lhj.fi/en/sorting-and-advice/sorting-instructions/>

# PICK-UP SERVICE

Transport fees	VAT 0 %	VAT 25,5%
Single item pickup	47,81 €	60,00 €
2-10 items/furniture (max. 15kg / piece)	79,68 €	100,00 €
2-10 garbage bags (max. 200l / pc)	79,68 €	100,00 €
Helper	39,84 €	50,00 €
Additional work starting at 30 min / person	19,92 €	25,00 €

A collection can include both furniture and waste bags, up to a maximum of 10 items in total (excluding one item pick-up). Please note the size and weight limits for objects and waste bags.

The pick-up price includes 15 minutes of work for one person. The working time starts as soon as the car arrives at the destination. When the driver arrives at the customer's premises, the goods must be ready to be moved and, if necessary, dismantled. Payment for collections is made afterwards by invoice. In addition to the transport charge, a waste handling fee will be charged in accordance with the LHJ's acceptance price list.

Read more about the Pick-up Service on page 13. The service can be ordered either from: [www.lhj.fi/sahkoinenasiointi](http://www.lhj.fi/sahkoinenasiointi) (only in Finnish) or by calling **03 424 2622** (weekdays from 9 am to 3 pm).



# THE MOST COMMON PICK-UP SERVICE WASTE FEES



See our full price list and station-specific prices at [www.lhj.fi/hinnat](http://www.lhj.fi/hinnat).  
The types of waste accepted may vary from station to station.

## Free waste

VAT 25,5%

Electronic waste from households .....	0 €
Pressure treated wood from households (less than 1 m <sup>3</sup> ) .....	0 €
Recyclable waste (packaging glass, metal, paper, cardboard, plastic packaging, waste textiles, window glass without frame) .....	0 €
Rimless tyres of vehicles .....	0 €
Household gas cylinders (<25 kg) and camping stove cartridges .....	0 €
Household hazardous waste (max. 100 kg / 100 l per time) .....	0 €
Wood waste (no pressure treated wood) .....	0 €

## The most common chargeable waste

VAT 25,5%

Combustible waste (less than 200 l) .....	5,00 €
Combustible waste, starting m <sup>3</sup> .....	12,00 €
Combustible waste, to be pretreated, starting m <sup>3</sup> .....	20,00 €
Single sofa / armchair (NOTE! Price € /seat) .....	10,00 €
Brushwood and garden waste, starting from 2 m <sup>3</sup> .....	3,50 €
Brushwood and garden waste, one waste bag (less than 200 l) .....	0,50 €



# GLOSSARY OF FEES AND SERVICES

## For the purposes of this price list:

**Regional collection point:** an unmanned collection point where properties excluded from individual waste collection can deliver their mixed waste as agreed. The right to use the regional collection point is reserved for properties that have paid an annual fee for the use of the regional collection point.

**Biowaste:** compostable, organic, entirely biodegradable waste.

**Recyclable waste:** waste that is required by municipal waste management regulations or instructions issued pursuant thereto be collected for recovery (e.g. glass, metal, cardboard and plastic).

**Household waste transport:** waste transport where waste is collected from a property. In property-specific waste transport, the waste bin can be the property's own waste bin or a waste bin in shared use, and it must be located in a place defined in waste management regulations.

**Waste transport organised by the property holder:** a transport system where the holder of the property arranges the transport with a professional waste transporter.

**Supplementary mixed waste collection:** waste management organised by the municipality for properties that have failed to fulfil their obligation to arrange waste transport with a registered waste carrier.

**Secondary responsibility of municipalities:** waste law under Article 33 of the Municipal Act, where the holder of the waste requests it due to the lack of other reasonably available services and the waste is of a quality and quantity suitable for the municipal waste management system.

**Packaging waste:** recyclable waste in the form of packaging, such as plastic, cardboard, glass or metal packaging.

**Freight service:** If the waste container is replaced more than every three years or if the waste container previously supplied by LHJ is no longer on the property, the customer may be charged the price of the waste container and the freight service fee for replacing the waste container and delivering it to the property.

**Mixed waste:** the municipal waste that remains after sorting out the recyclable waste and other materials not included in mixed waste.

**Ventilated bio-waste bin:** a bio-waste bin that is equipped in such a way that the bio-waste can dry in the bin.

**Municipal waste:** waste from residential sources and waste of similar nature and quantity from industrial, service or other activities: excluding hazardous waste, dry toilet waste, sewage, sewage sludge, soil and stone or similar waste.

# GLOSSARY OF FEES AND SERVICES



## Basic fee for waste management

The basic fee for waste management covers the services provided to households, which are the responsibility of the municipality under the Waste Act. These include the collection and treatment of household recyclable waste and hazardous waste, waste advice, the operation of waste committee and waste management development work. The costs of the control register set up under Article 143 of the Waste Act and the preparatory

work for keeping a register of sewage sludge and septic tank sludge are also covered by the basic fee. In accordance with Article 79 of the Waste Act, the basic fee is based on the use of the property. In the case of holiday homes, the fee is lower because they are assumed to be used only part of the year. The basic fee is not dependent on the amount of waste generated or the number of inhabitants in the property.

## Waste bin service

The waste company is obliged to provide the waste bins of 140-660 l to the property owner free of charge when the customer joins separate collection. The same applies in cases where the waste bin size is not appropriate for the household, additional waste bins are needed, the waste bin is broken or otherwise does not meet the requirements of the waste management regulations. The bin is delivered to the property and the waste holder places the bin at

the location of their choice, taking into account the requirements of the waste management regulations. If the waste bin is replaced more than every three years or if the waste bin previously supplied by the waste company can no longer be found on the property, the customer may be charged the price of the waste bin and a freight charge for the replacement/transport of the waste bin to the property.

## Supplementary collection of mixed waste organised by the municipality

The waste fee for a property subject to a supplementary mixed waste collection organised by the municipality is determined by the use of the property and the frequency of emptying the property's waste bin at the time of billing. The waste fee is charged to the owner or holder of the property. The waste fee covers costs such as the waste bin, the emptying of the waste bin, waste reception, treatment, transport and administration. If a property is sold or taken into use in the

middle of the year, the annual fee is charged according to the months of use. The same applies if the customer changes from a supplementary collection of mixed waste to a private service provider. The waste management authority decides on the emptying intervals at which the waste is to be emptied in derogation of the waste management regulations. An application for a special interval must be sent to the following address: [www.jateltk.fi](http://www.jateltk.fi)

# GLOSSARY OF FEES AND SERVICES

## Separate collection of biowaste organised by the municipality

Waste collection fees are determined by the type of bio-waste collection equipment in the property, the location of the waste bin and the number of times it is collected. The waste fee includes the transport and treatment of

bio-waste and the mechanical washing of the manually movable (wheeled) bin twice a year. The fee is charged even if some or all of the bio-waste bins are empty at the time of collection.

### Longest possible emptying intervals for biowaste bins in accordance with waste management regulations:

Bin	Summer time intervals (weeks 18-40)	Winter time intervals (weeks 41-17)
Biowaste bin, 140 l - 660 l	2 weeks	4 weeks
Biowaste bin, ventilated 140 l and 240 l	4 weeks	4 weeks
Crane-liftable containers	4 weeks	4 weeks

In urban areas, it is also possible to empty bio-waste bins once a week throughout the year. If possible in urban areas, the emptying interval can also be every 3 weeks.

No waste fee will be charged if the collection container has not been emptied due to negligence by Loimi-Hämeen Jätehuolto Oy or the contractor. The property holder must report the negligence to Loimi-Hämeen Jätehuolto

Oy. It is not considered negligence if the collection container is too heavy, broken, frozen, or too tightly packed.

The cancellation of collection must be given two weeks in advance. If the bio-waste bin contains a substantial amount of non-compostable waste, the waste collection fee will be increased by 100%.

# GLOSSARY OF FEES AND SERVICES



## Separate collection of packaging waste organised by the municipality

Waste collection fees are based on the type of collection equipment, the location of the bin and the number of times the bin is collected from the property for packaging waste (glass, metal, cardbo-

ard/plastic and plastic). The waste fee includes the transport of the packaging waste. The fee is charged even if some or all of the packaging bins are empty at the time of collection.

### Longest possible emptying intervals for packaging waste bins in accordance with waste management regulations:

Type of waste	Bin	Summer time intervals (weeks 18-40)	Winter time intervals (weeks 41-17)
Cardboard packaging	140 l to 660 l wheeled and crane-liftable containers	16 weeks	16 weeks
Plastic packaging	140 l to 660 l wheeled and crane-liftable containers	16 weeks	16 weeks
Glass packaging	140 l to 660 l wheeled and crane-liftable containers	24 weeks	24 weeks
Metal packaging and small metal	140 l to 660 l wheeled bins and crane liftable containers.	24 weeks	24 weeks

For cardboard and plastic packaging, it is also possible to have the bins emptied once a week throughout the year in the urban area. Where possible, the frequency of emptying can also be every 3 weeks in the urban area. For glass and metal packaging, the intervals are 4, 8, 12, 16 or 24 weeks.

No waste fee will be charged if the collection container has not been emptied due to negligence by Loimi-Hämeen Jätehuolto Oy or the contractor. It is not considered negligence if the collection con-

tainer is too heavy, broken, or if the access route to the property has been unusable. The property owner must notify Loimi-Hämeen Jätehuolto Oy of any negligence. Notification must be given if collection is discontinued.

The cancellation of collection must be given two weeks in advance. If the packaging waste container contains a significant amount of waste other than the types of waste according to the instructions, the waste collection fee will be increased by 100%.

# GLOSSARY OF FEES AND SERVICES

## Pick-up service

The pick-up service picks up waste and items that cannot be placed in a regular waste bin due to their large size or other characteristics. See a more detailed listing on our website. The price of the pick-up service consists of labour costs, transport fee and possible waste handling fee.

Pick-up will be arranged within two weeks of the order on weekdays between 8 am and 2 pm. The service can be ordered either from: **www.lhj.fi/sahkoinenasiointi (only in finnish)** or by calling **(03) 424 2622** (weekdays from 9 am to 3 pm).

## DETERMINATION OF WASTE FEES

### Waste fees are complied with:

- Properties/waste holders whose waste management services are organised by LHJ on behalf of the municipality.
- In the case of waste transport organised by the holder of the property, when waste is delivered for treatment at a reception point designated by the LHJ.



# WASTE SEARCH - HELP FOR EVERYDAY ENVIRONMENTAL ACTIONS



Do you know how to recycle fluorescent tubes or electronic waste? It's no longer a question of knowing how to sort them properly, as the right answer can be found quickly on the Waste Search. Waste search is an easy-to-use sorting assistant developed by Loimi-Hämeen Jätehuolto, where you can find recycling instructions and collection points for up to a thousand different items and things. Sorting instructions can also be shared with others, even on your smartphone.

The site is web browser-based and works on all devices with a working internet connection. Waste search also has a handy map service that shows the nearest recycling points, whether you are in Forssa or Säkyliä.

Service is available only in Finnish.

**Check out the waste search at:**  
[www.lhj.fi/jatehaku](http://www.lhj.fi/jatehaku)



If you cannot find sorting instructions for the waste you are looking for in the Waste search, you can contact our experts by sending an email to [asiakaspalvelu@lhj.fi](mailto:asiakaspalvelu@lhj.fi).

You can also suggest new waste and recycling instructions for which you would like to find in the waste search.



## CONTACT DETAILS



[www.lhj.fi/en](http://www.lhj.fi/en)  
[www.lhj.fi/jatehaku](http://www.lhj.fi/jatehaku)



Customer service (from 9 am to 15 pm):  
Tel. 03 424 2622 | [asiakaspalvelu@lhj.fi](mailto:asiakaspalvelu@lhj.fi)

Have you already noticed that there is also a chat option on our website?

## WASTE STATIONS

### Kiimassuo waste center

Kiimassuontie 127, 30420 Forssa  
Tel. vaaka 03 424 2620  
mon-fri 7-18

### Hallavaara waste center

Luvalahdentie 323, 27710 Köyliö  
Tel. vastaanotto 02 5541 922  
mon-fri 10-18 ja pe 8-16

### Akaa waste station, Hirsikangas

Kierrätystie 9, 37800 Akaa  
Tel. 0440 242 655  
mon-fri 10-18

### Huittinen waste station

Klaavolantie 4, 32710 Huittinen  
Tel. 040 530 3376  
mon 12-18 and wed 12-18

### Loimaa waste station, Kirveskallio

Myllykyläntie 120, 32200 Loimaa  
Tel. 02 763 2713  
mon-tue 10-18, wed-thur 8-16 and fri 8-12

### Punkalaidun waste station

Yrittäjänkuja 4, 31900 Punkalaidun  
Tel. 040 673 1971  
tue 12-18 and thur 12-18

### Sastamala waste station

Pesurinkatu 179, 38200 Sastamala  
Tel. 03 511 5831  
mon-fri 11-18

### Somero waste station

Salontie 91, 31400 Somero  
Tel. 050 586 7878  
mon 12-18, wed 12-18 and fri 8-14

### Urjala waste station

Järveläntie 30, 31760 Urjala  
Tel. 0440 342 705  
tue 10-18 and thur 10-18

### Summer Saturdays:

Waste stations are open every 1st Saturday of the month from 9 am to 1 pm from May to early September (weeks 18-36, excluding Huittinen and Punkalaidun).

The Kiimassuo waste management centre also serves every Saturday from 9 am to 1 pm from May until the beginning of September (weeks 18-36).

Does not apply on public holidays.